

J. MAYER H.
ARCHITECTURE / DESIGN / RESEARCH

J. MAYER H.
est. 1996

Jürgen Mayer H., Dipl.-Ing., M.Arch.
Bleibtreustraße 54
10623 Berlin, Germany

t +49 / 30 / 644 90 77 0
f +49 / 30 / 644 90 77 11
contact@jmayerh.de

www.jmayerh.de



J. MAYER H. Architects

Founded in 1996 in Berlin, Germany, J. MAYER H Architects' studio, focuses on works at the intersection of architecture, communication and new technology. Recent projects include the Town Hall in Ostfildern, Germany, a student center at Karlsruhe University and the redevelopment of the Plaza de la Encarnacion in Sevilla, Spain. From urban planning schemes and buildings to installation work and objects with new materials, the relationship between the human body, technology and nature form the background for a new production of space.

Jürgen Mayer H. is the founder and principal of this crossdisciplinary studio. He studied at Stuttgart University, The Cooper Union and Princeton University. His work has been published and exhibited worldwide and is part of numerous collections including MoMA New York and SF MoMA. National and international awards include the Mies-van-der-Rohe-Award-Emerging-Architect-Special-Mention-2003, the Winner Holcim Award Bronze 2005 and the Red Dot Award 2009. Jürgen Mayer H. has taught at Princeton University, University of the Arts Berlin, Harvard University, Kunsthochschule Berlin, the Architectural Association in London, the Columbia University, New York and at the University of Toronto, Canada.

Curriculum Vitae

Jürgen Mayer H.



Project: 2005 - 2008

Completion: 2008

Total floor area: 1.190 m²

Client: Private

Architect on Site: Uli Wiesler, Stuttgart

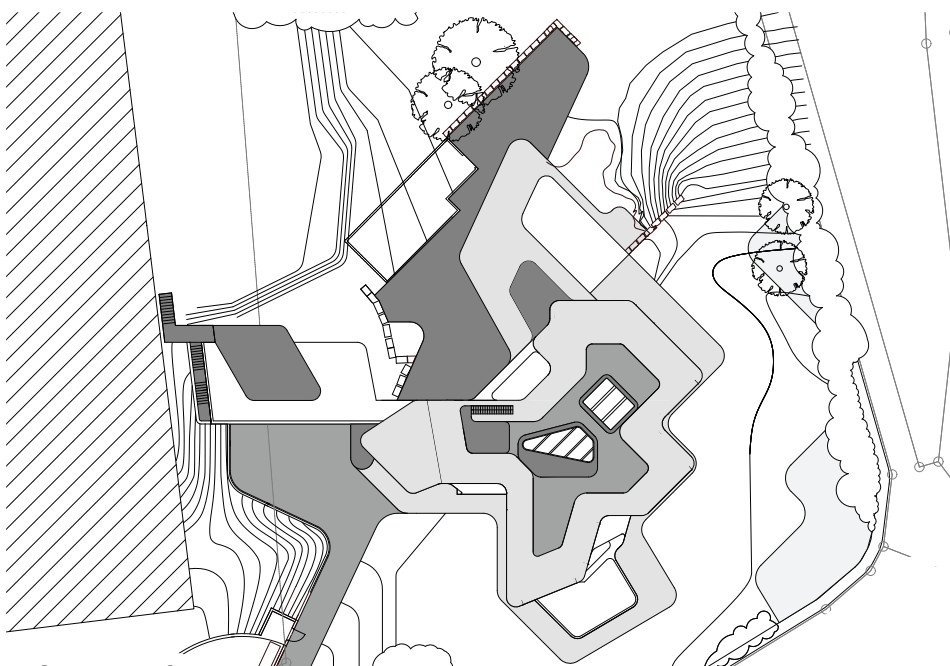
Structural Engineer: Dieter Kubasch, Ditzingen

Service Engineer: Hans Wagner, Filderstadt

Building physics: Dr. Schaecke und Bayer, Waiblingen

Landscape architect: Klaus Wiederkehr, Nürtingen

Photography: David Franck, Ostfildern



siteplan

The geometry of the building is based on the footprint of the house that was previously on the site. Originally built in 1984 and extended since then, the new building echoes the „family archeology“ by duplication and rotation. Lifted up, it creates a semi-public space on ground level between two layers of discretion. The skin performs a sophisticated connection between inside and outside and offers spectacular views onto the old town of Marbach and the German national literature archive on the other side of the Neckar valley.

Dupli.Casa
House near Ludwigsburg, Germany



International Competition, 2004, 1st Prize

Project: 2006
Completion: 2007

Construction Cost: 5,5 Mio. €
Total Floor Area: 2.355 m²

Client: Vermögen und Bau Baden-Württemberg, Amt Karlsruhe
Architect on Site: Ulrich Wiesler, Stuttgart
Multidisciplinary Engineering: ARUP GmbH, Berlin
Kitchen Engineers: Martin Scherer, Darmstadt
Landscape Architects: Bauer und Partner, Karlsruhe
Photography: David Franck, Ostfildern

Permanent Collection of the Museum of Modern Art,
New York, USA

Holz 21 Prize 2006, Commendation

The "Mensa Karlsruhe" is an elastic space, sitting in the centre of the Karlsruhe University Campus. As an extension of the already existing facilities, the canteen will serve a growing number of students. The building is set to become the new fulcrum of the campus, negotiating between the identities of three universities as well as between the urban fabric and the Hardtwald forest. Different levels of porosity within the building react to this specific condition.

Moltke Canteen

A new canteen for the colleges of Karlsruhe, Germany

Invited Competition, 2005, 1st Prize

Project: 2005 - 2007

Completion: 2007

Total Floor Area: 5.436 m²

Client: Cogiton Projekt Alster GmbH, Hamburg

Architect on Site: Imhotep, Donachie und Blomeyer, Berlin,

Architekturbüro Franke, Hamburg

Structural Engineers: CBP, Hamburg

Building Services: Energiehaus, Hamburg; Sineplan, Hamburg

Lighting Engineers: Andres-Lichtplanung, Hamburg

Landscape Architects: Breimann & Bruun, Hamburg

Model: Werks5, Berlin



The building site is situated at the intersection between Hamburg's lively downtown and its urban landscape rich in water and mature trees. It is at a transition from city to nature, and the gateway building to the bustling metropolitan core. The horizontally striped facade with its floating 'eyes' celebrates the view onto this unique context. A public park in front of the building continues the design strategy of the facade into the landscape. The 'eyes' in the facade and the platforms in the park form places to meet and contemplate. The office spaces serve both a generic spatial layout and specific moments related to the 'eyes'. Large spans provide for various office layout configurations in combination with balconies and climatically tempered outdoor spaces of the 'eyes'.

The office building 'An der Alster 1' links interior and exterior spaces to the public park in front of the building and to the city context of Hamburg, becoming a new anchor at the prestigious Aussenalster waterfront.

ADA1

Office building, Hamburg, Germany

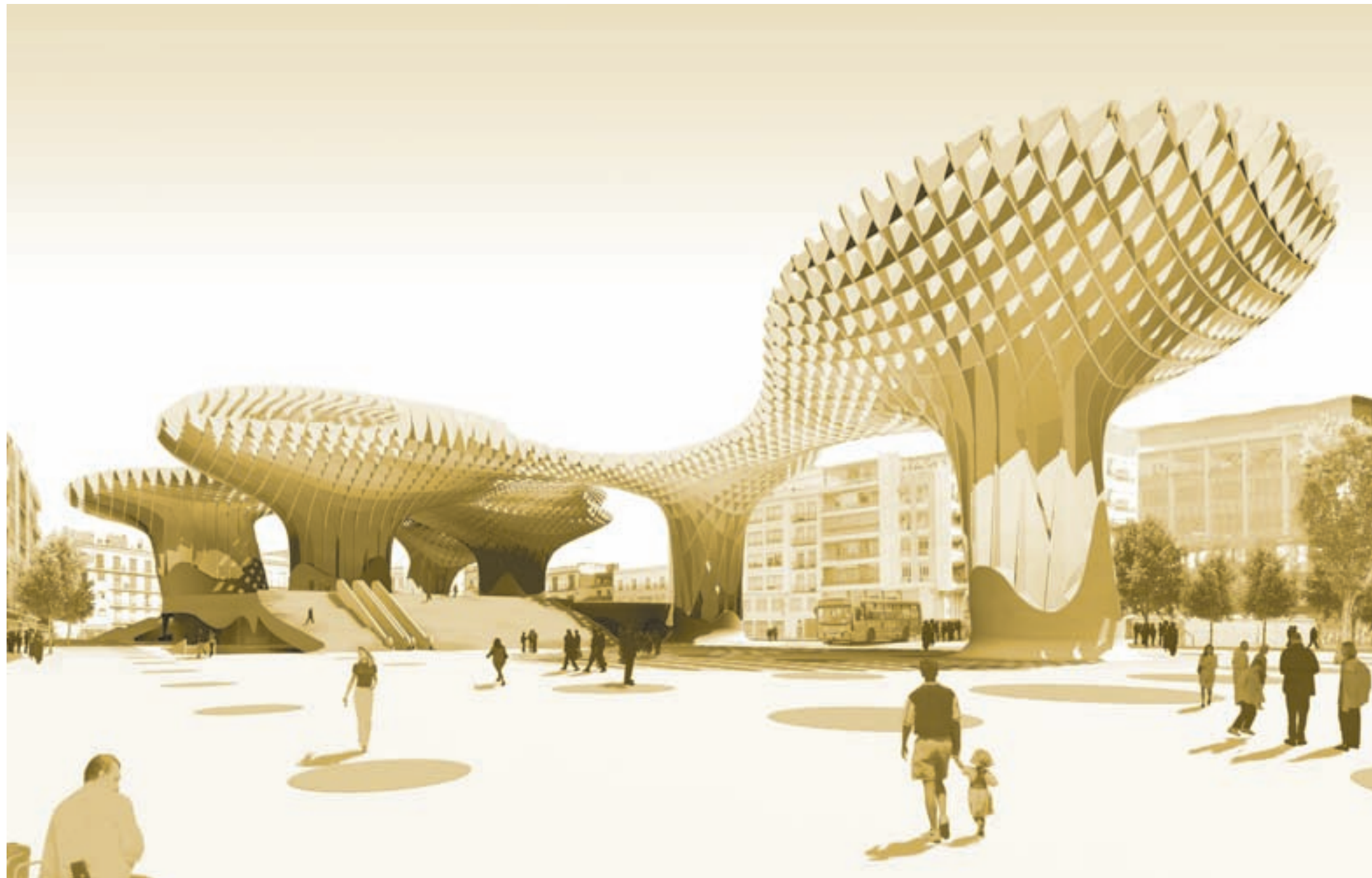


The project “Steckelhoern 11” is located in the old centre of Hamburg, in between the cities main commercial areas and the new, highly noticed “Hafen City” development.

The triangular shaped lot stretches across the city block, thus allowing for a narrow facade of about 1.3m width facing the harbor and a main facade of about 26.4m oriented towards Steckhoern street. The vertical design of the latter references the architectural composition of the neighboring historic facades while the soft setbacks pay tribute to the existing volumes as well as to height regulations. The height development strengthens the appearance of the building towards the “Speicherstadt” and articulates a special moment in the skyline of the historic city centre. The particular geometry of the floor plan is the basis for the organization of the building. As the ground level is conceived either as a spacious lobby for the main tenant or a public cafe, the upper floors provide for generous, flexible office space, most of it allowing a view of the “Katharinenkirche” and/or the “Hafen City”. The top floors provide additional outside space on balconies/loggias and a roof terrace, offering a spectacular panoramic view over the old and new city of Hamburg.

S11

Office building, Hamburg, Germany



International Competition, 2004, 1st Prize

Project: 2005 - 2007

Completion: 2008 - 2011

Construction Cost: 90 Mio. €

Total Floor Area: 12.670 m²

Client: Ayuntamiento de Sevilla and SACYR

Management Consultant: Dirk Blomeyer

Realization: Arup GmbH

Technical Support for Plants-Competition:
Coqui-Malachowska-Coqui with Thomas Waldau

Plexi-Model: Werk 5, Berlin

Timber-Model: Finnforest Merk, Bremen

Permanent Collection the Museum of Modern Art, New York,
and staatliche Museen zu Berlin, Preussischer Kulturbesitz, Berlin

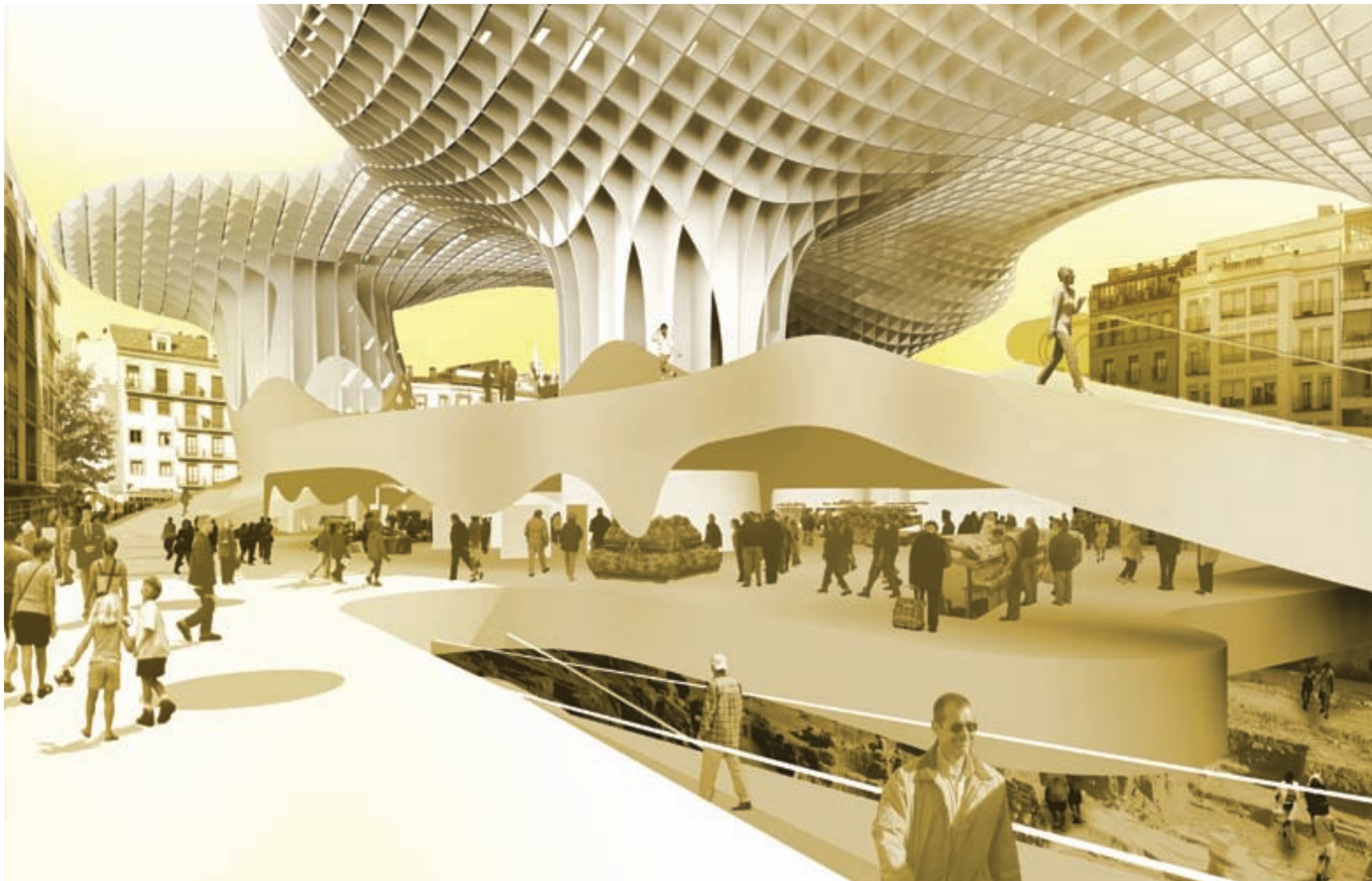


Metropol Parasol is a new icon project for Seville, - a place of identification to articulate Seville's role as one of Spain's most fascinating cultural destinations. Its role as a unique urban space within the dense fabric of the medieval inner city of Seville allows for a great variety of activities such as contemplation, leisure and commerce. A highly developed infrastructure helps to activate the square, making it an attractive destination for tourists and locals alike.

These large mushroom like structures offer an archeological site, a farmers market, an elevated plaza, multiple bars and restaurants underneath and inside the parasols, as well as a panorama terrace on the very top of the parasols. Thought of as a light wood structure, the parasols grow out of the archeological excavation site into a contemporary landmark. The columns become prominent points of access to the museum below as well as to the plaza and panorama deck above, defining a unique relationship between the historical and the contemporary city.

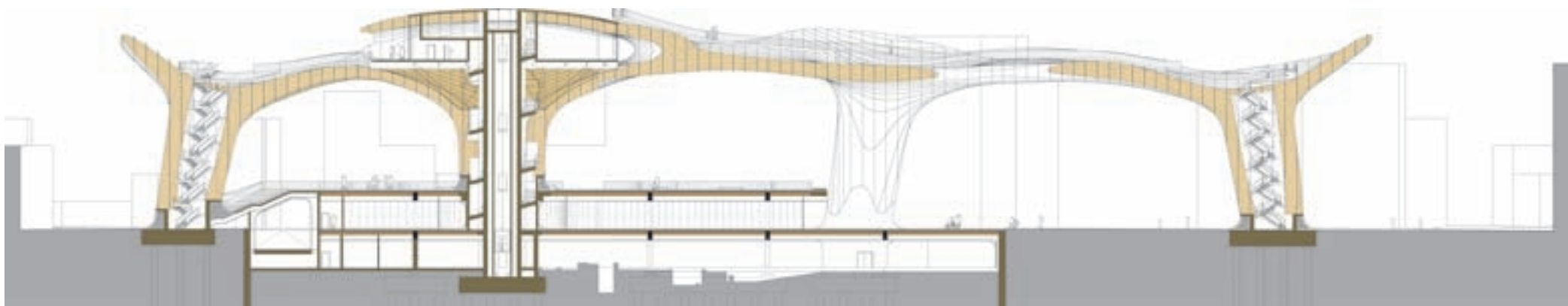
Metropol Parasol

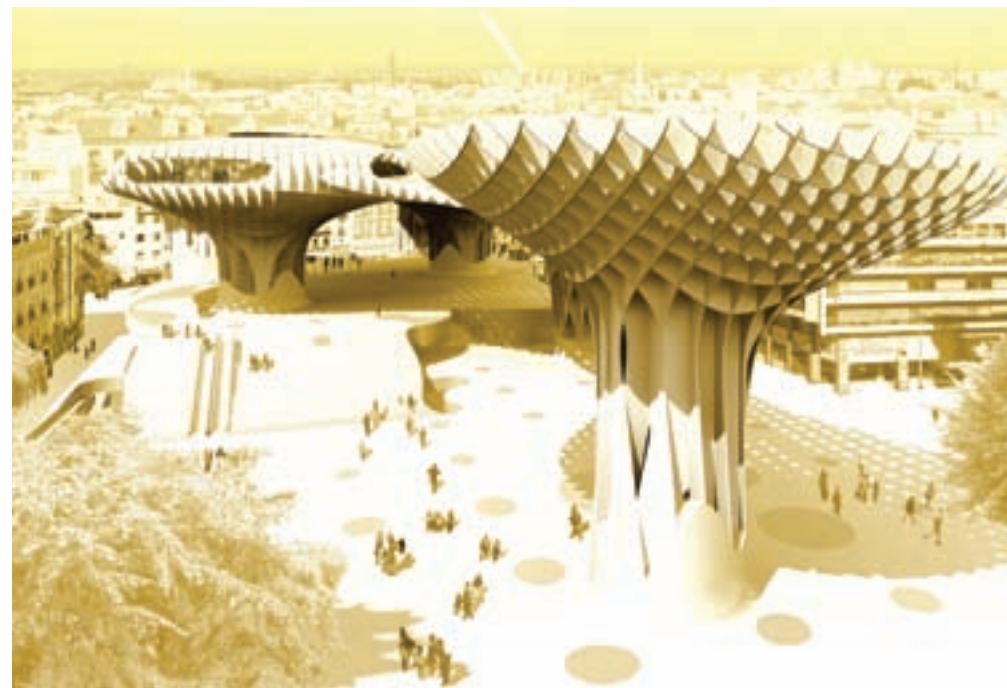
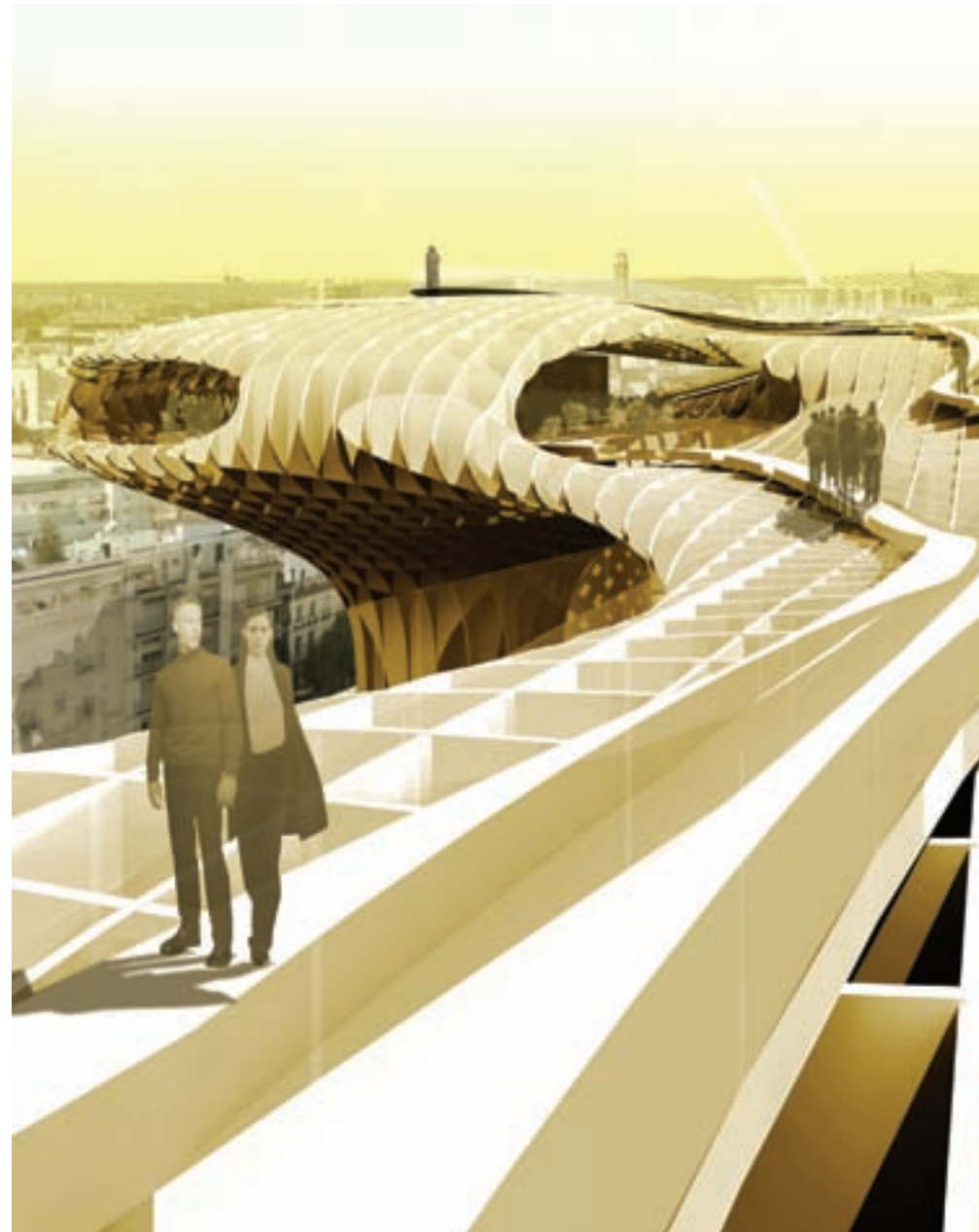
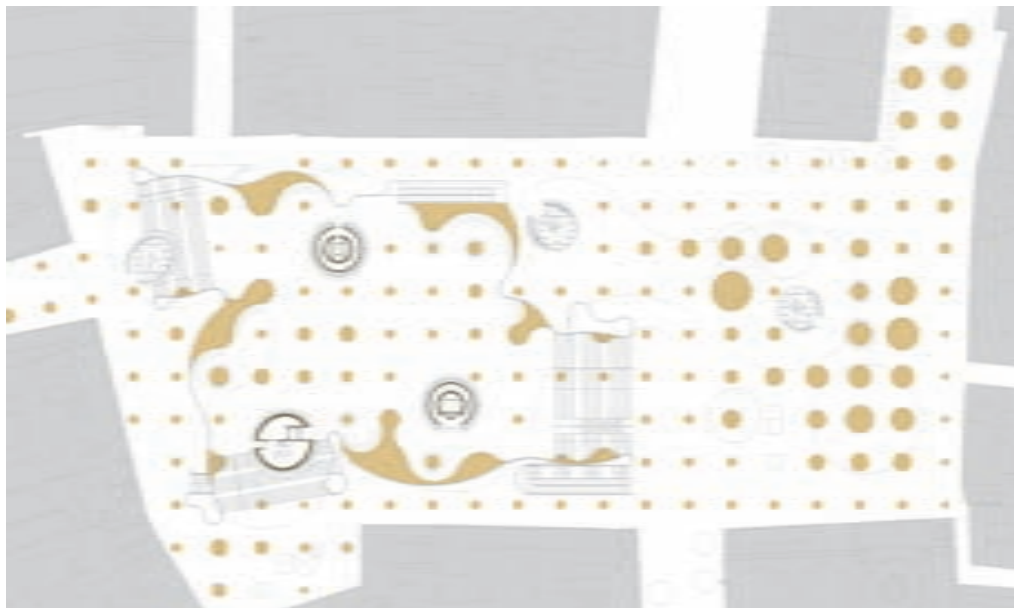
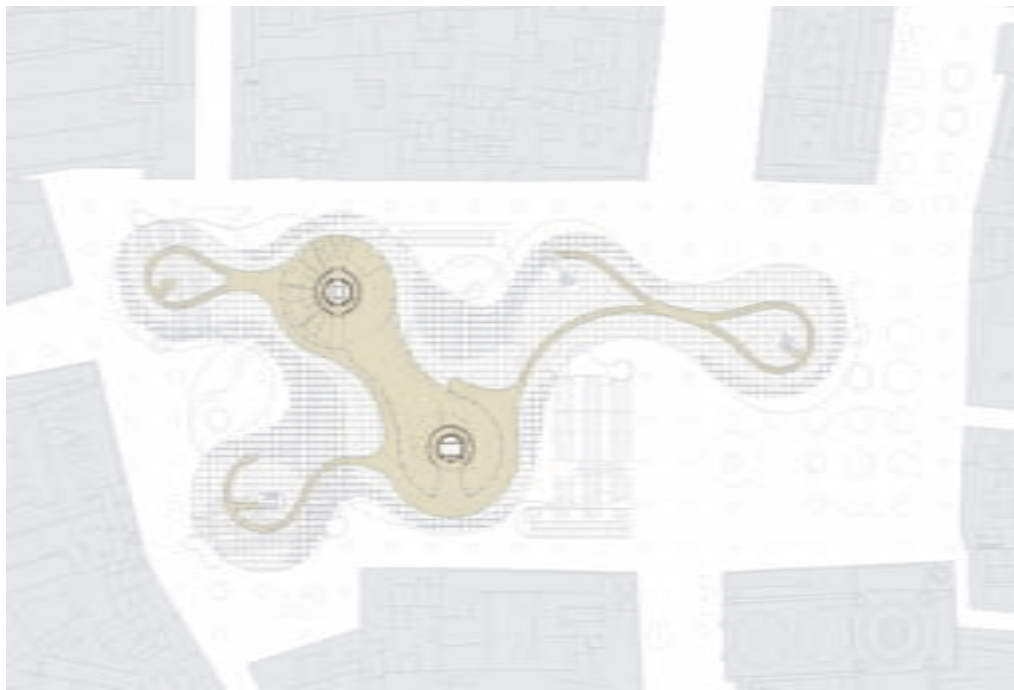
Redevelopment of the Plaza de la Encarnacion, Seville, Spain



Metropol Parasol

Redevelopment of the Plaza de la Encarnacion, Seville, Spain





Metropol Parasol
Redevelopment of the Plaza de la Encarnación, Seville, Spain



Invited Competition, 2005, 1st Prize

Project: 2005 - 2007

Completion: 2007

Construction Cost: 3 Mio. €

Total Floor Area: ca. 2.000 m²

Client: Extension of Danfoss Universe, Nordborg

Architect on Site: Hallen&Nordby, Esbjerg, Kolding

Technical consultants: Carl Bro, Esbjerg

Model: Werk 5, Berlin

Danfoss Universe is a science park in Denmark, embedded in the agricultural landscape of Nordborg next to the founder's home and the Danfoss HQ. It opened in May 2005 and is already enlarging due to its considerable success. The masterplan for Danfoss Universe Phase 2 includes an exhibition building (Curiosity.Center) and a restaurant (Food.Factory) which extends the summer based outdoor park into the winter months by enclosing spaces for exhibitions and scientific experiments.

The new buildings rise up from the ground and provide spaces which articulate the fusion of outdoor landscape and indoor exhibition. This active ground modulates according to program and location in the park. The endpoints of the buildings blur the line between building and park by offering inside-out spaces as display areas and projection surfaces related to the temporary exhibitions inside. Silhouettes, as groups of land formations, define the unique newly programmed horizon line of Danfoss Universe.

Danfoss Universe

Food Factory und Curiosity center in Nordborg, Denmark

International Competition, 1998, 1st Prize

Project: 1998 - 2001

Completion: 2001

Construction Cost: 11 Mio. €

Total Floor Area: 6.000 m²

Client: Stadt Ostfildern, Germany

Architect on site: Ulrich Wiesler, Stuttgart

Structural Engineers: Müller & Müller

Photography: David Franck

Presented at the German Pavillon, Venice Biennale 2004



Stadt.haus is located at the center of Scharnhauser Park, a former American military site next to Stuttgart airport. It is a multifunctional public building unifying various public programs which generate synergetic effects provoking programmatic and visual transparency. Spatially the entire building is considered as a large, open space with inlays of certain core elements. Light and water animations are an integral part of the stad.haus. The stad.haus and square construct a new public building prototype by offering simultaneity of city life in real, mediated and virtual space.

Scharnhauser Park Town Hall

Mixed-Use Civic Center, Ostfildern, Germany



Invited Competition, 2005, 1st Prize

Project: 2005 - 2011
Completion: 2011

Construction Cost: 45 Mio. €
Total Floor Area: 21.600 m²

Client: Stationsomgeving NV Hasselt
in collaboration with: a2o-architecten, Hasselt
Lens°ass architecten, Hasselt

Project Management: Eurostation, Antwerpen

Phase 1: Redevelopment of the railway-station area
in Hasselt based on the West 8 masterplan, including
two iconic buildings and low-rise blocks for
hotels, offices, and housing.

Phase 2: Court of Justice, Hasselt.

The international competition for the redevelopment of the station quarter of Hasselt, Belgium based on the master plan by West8 was won by the architects J. MAYER H. Architects, a2o-architecten and Lens°ass architecten working together as a team. The new development includes low rise blocks for hotels, offices, housing and two matching iconic point buildings, one of which is to become the new Court of Justice for Hasselt, the developer can now reveal. The new court building will become a key central anchor point for the reshaping of the entire area. Completion is planned for 2011.

Hasselt Courts of Justice

Stationsomgeving NV Hasselt, Belgium



Invited Competition, 2007, 1st Prize

Project: 2008 - 2012

Completion: 2012

Construction Cost: ca. 14 Mio. €

Total Floor Area: 9.749 m²

Client: Wohnungsgenossenschaft „Carl Zeiss“ eG, Jena

Project Management: Kappes Partner IPG, Berlin

Structural Engineers: Dr. Krämer GmbH, Weimar

Model: Werk 5, Berlin



The subject of „sustainability“ is characterized by high degree of complexity and constant reevaluation based on the latest results of scientific research. Taking up the idea of various interdependencies of the subject, the metaphor of the „net“ transcribes its abstract character into a spatial configuration. Similar to a large, grown organism, the elements of the exhibition connect into one equal structure. All technical necessities as well as media carrying content are seamlessly integrated into the overall architectural concept, articulating local differentiations within one homogenous system.

For the visitor, the exhibition offers multiple forms of experience on different sensual levels. Based on the local settings, access is possible through three points of entry. Vertical elements suggest different areas dedicated to changing topics without strictly separating them. Hence, the path of the visitor cannot be thought of as being predetermined but remains open to individual, play-like exploration.

Sonnenhof

Mixed-Use Buildings, Jena, Germany

Invited Competition, 2008, 1st Prize

Project: 2008 - 2011

Completion: Spring 2011

Client: Euroboden Berlin GmbH, München

Architect on Site: Architekturbüro Wiesler, Stuttgart

with Thomas Quinten Projektmanagement, Berlin

Structural Engineers: EiSat GmbH, Berlin

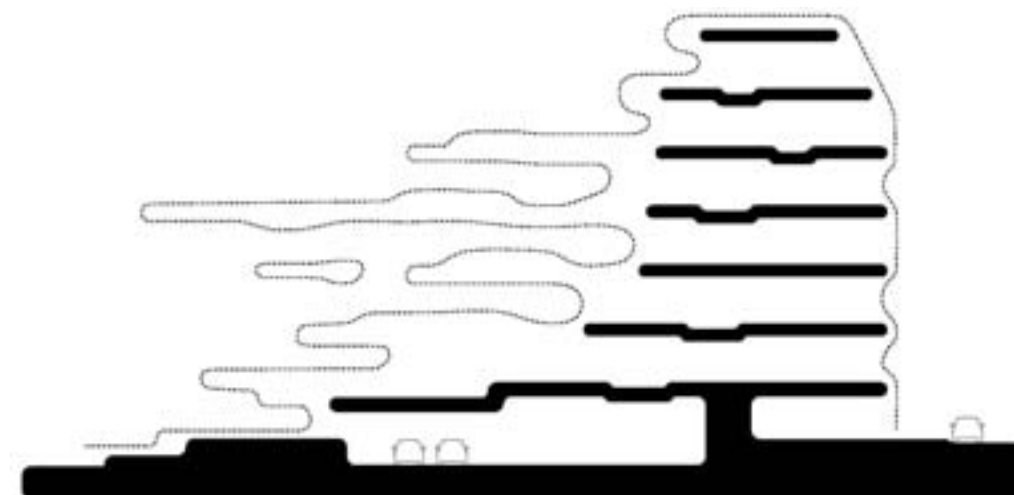
Building Services: Ingenieurgesellschaft Striewisch mbH

Model: Werk 5, Berlin



Property development group Euroboden is building a unique apartment house at Johannisstraße in Mitte, Berlin's downtown district. J. MAYER H. architects' design for the building, which will soon neighbor both Museum Island and Friedrichstrasse, reinterprets the classic Berliner Wohnhaus with its multi-unit structure and green interior courtyard. A suspended lamella facade not only provides privacy but also draws historical reference to the elaborately decorated facades from the Wilhelminian period. Plans for the ground floor facing the street also include a number of commercial spaces. The generously sized apartments will face south-west, opening themselves to a view of the calm, carefully designed courtyard garden. Spacious, breezy transitions to the outside create an open residential experience in the middle of the city that, thanks to the variable heights of the different building levels, also offers an interesting succession of rooms. The units' varying floorplans and layouts indicate a number of housing options; condominiums are organized into townhouses with private gardens, classic apartments or penthouses with a spectacular view of the old Friedrichstadt. The integrated design concept, which

incorporates everything from façade to stairwells, elevators to apartment interiors, promises a unique spatial and living experience with an eye to high design.



JOH 3

Apartmenthouse Johannisstraße 3, Berlin



Invited Competition, 2007, 1st Prize

Project: 2007 - 2009

Completion: 2009

Construction Cost: ca. 7 Mio. €

Size: ca. 1.000 m²

Client: Autostadt GmbH, Wolfsburg

Architect on Site: Jablonka Sieber Architekten, Berlin

In Cooperation with: Art+Com, Berlin

Awarded Red Dot 2009



The subject of „sustainability“ is characterized by high degree of complexity and constant reevaluation based on the latest results of scientific research. Taking up the idea of various interdependencies of the subject, the metaphor of the „net“ transcribes its abstract character into a spatial configuration. Similar to a large, grown organism, the elements of the exhibition connect into one equal structure. All technical necessities as well as media carrying content are seamlessly integrated into the overall architectural concept, articulating local differentiations within one homogenous system.

For the visitor, the exhibition offers multiple forms of experience on different sensual levels. Based on the local settings, access is possible through three points of entry. Vertical elements suggest different areas dedicated to changing topics without strictly separating them. Hence, the path of the visitor cannot be thought of as being predetermined but remains open to individual, play-like exploration.

Level Green

The Concept of Sustainability

Exhibition, Wolfsburg, Deutschland



ZZ.Sankt.Georg - Centre for Dentistry

Project: 2008

Completion: 2009

Floor Area: 400m²

Client: Centre for Dentistry Brauner-Wegner-Priehn

Architect on Site: Architekturbuero Franke

Service Engineers: Altschul dental GmbH/ Grill&Grill, Frankfurt

Lounge: X-Chairs, Quinze & Milan (www.quinzeandmilan.tv),
designed by J. MAYER H.

Awarded ZWP Spezial Designpreis: „best overall concept“



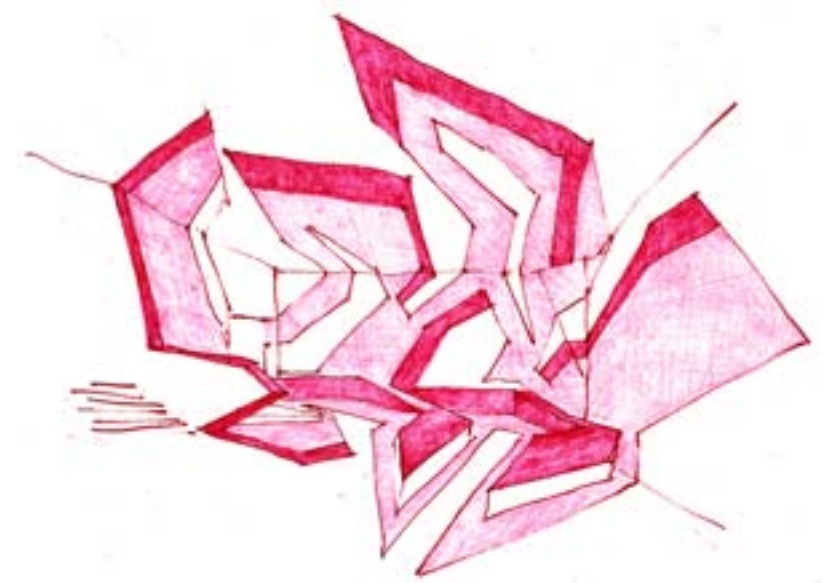
ZZ.Sankt.Georg
Centre for Dentistry, Hamburg, Germany

J. MAYER H.
ARCHITECTURE / DESIGN / RESEARCH

Vitra Design Museum, Weil am Rhein, 2007

Project: February - June 2007

Client: Vitra Design Museum, Weil am Rhein
Courtesy Magnus Müller Gallery, Berlin, Germany
Photographer: Thomas Dix for Vitra and J. MAYER H.
Vitra Design Museum, Weil am Rhein



Housewarming MyHome is part of a larger group show at the Vitra Design Museum. The exhibition focuses on contemporary questions concerning the affects of living with and amongst a collection of various installation works. Housewarming MyHome extends the Museum Café into the exhibition area with a large supergraphic displayed on the floor, walls and ceiling, thus blurring their spatial boundaries. Referencing the architectural language of Frank O. Gehry's deconstructivist buildings, Housewarming MyHome echoes and intensifies the interior space. Certain zones of the wall and seating surfaces are covered with a heat-sensitive coating which turns white upon being warmed. Built in hot wires are programmed to turn on and off, creating temporary ornamental clusters of parallel white lines, which unexpectedly appear and disappear in rhythm with their heating and cooling. As visitors of the Museum and the Café make contact with the installation, they leave temporary traces, imprints of the temperature-landscape of their bodies. The temperature-sensitive surfaces become the interface of interactivities, coming both from external stimuli via touch and from internal stimuli via the built-in hot wires. As such, the architecture turns into an active participant in relation to the human body.

Housewarming MyHome

Vitra Design Museum, Weil am Rhein, Germany



Bed sheets, Temperature-Sensitive
Data-Protection Pattern on Cotton

Project: 2006

Client: Henry Urbach architecture Gallery, New York

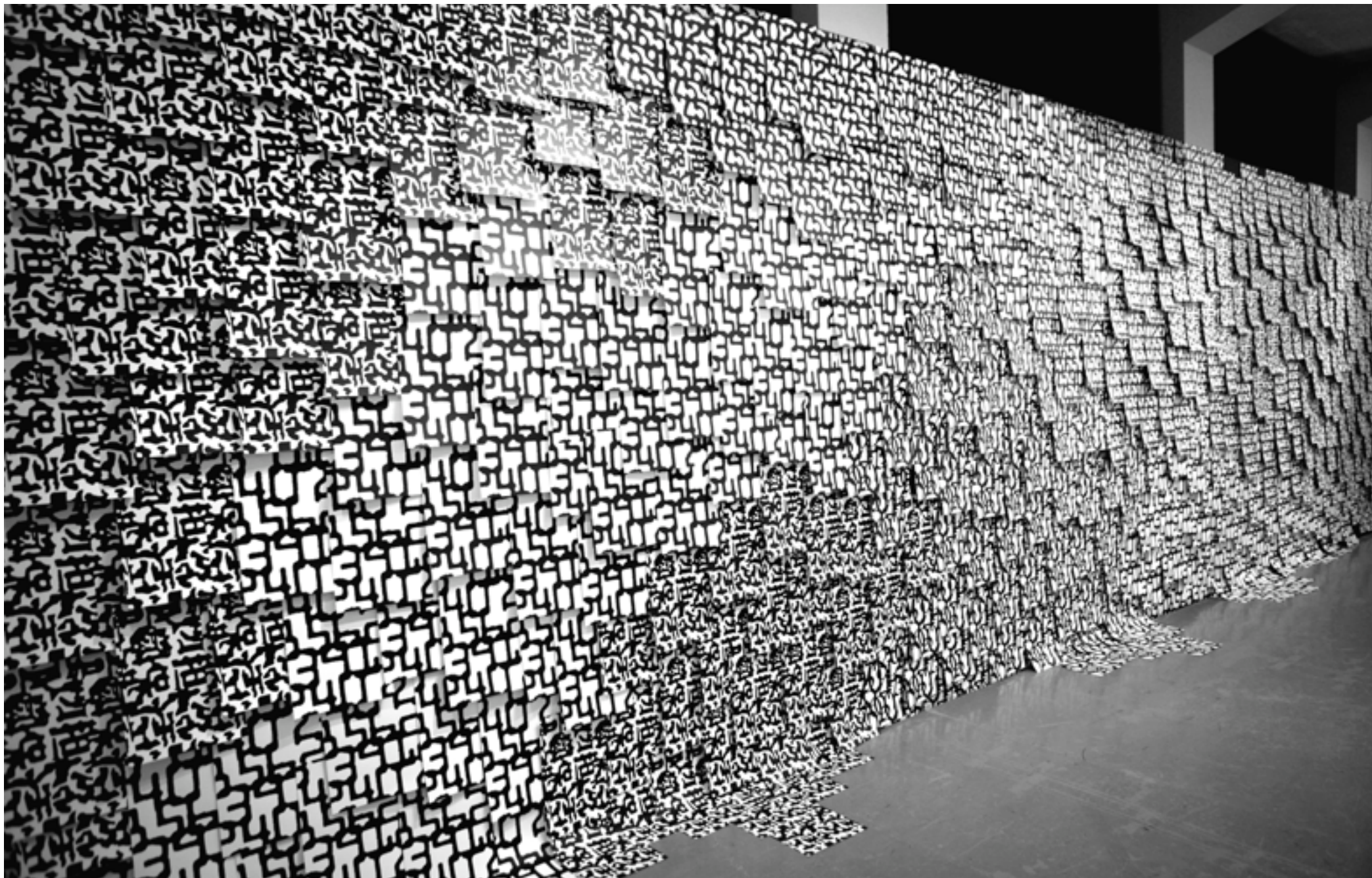
Courtesy Magnus Müller Gallery, Berlin, Germany

Photographer: Christina Dimitriadis



Lie

Henry Urbach architecture Gallerie, New York, USA



Various lines of demarcation, or rather ‘facades of countenance’, have always separated the personal and the public. And in the case of information, the relationship between public and private becomes a complicated set of liabilities. It’s a contract of confidentiality. By the beginning of the Twentieth Century, information control generated a visual pattern called Data Protection Pattern or DPP that helps to veil personal information in print media. Letter and numbers, ingredients of information construction, are used in excess to create a speechless and slurry form of covering text.

Today, a new global network of unsecured data transfer remains to be resolved. While DPP continues to proliferate in print media, it provides the model for carriers of electronic information, which are physically erased by overwriting the entire data carrier, or at least the used sectors, with a confusion of pattern. An excess of information transforms the „private“ into apparent nonexistence.

Pre.text/Vor.wand GlobalDesign

Museum für Gestaltung Zürich, Switzerland



Dataprotection Pattern Flock Print, Glamour Group Show

Project: 2004

Client: SFMOMA, Sanfrancisco,USA

Courtesy Magnus Müller Gallery, Berlin, Germany



Pre.text / Vor.wand SFMOMA
Data Protection Pattern, San Francisco, USA